

# DIAGNOSTICS INSTRUMENTS

For electronic control engines



**IVECO  
MOTORS**

**FPT**  
POWERTRAIN TECHNOLOGIES

## PORTABLE TESTER PT-01



With the PT-01 portable tester, it is possible to diagnose and inquire the ECUs controlling the IVECO MOTORS engine injection. The PT-01 portable tester has been designed for use on the field, in the workshop and in the industrial environments.

### Communication cable

The instrument is connected to the engine ECU by means of only one cable for both tested supply and “**communication**” with the ECU connected to it.



The ECUs that can be diagnosed by means of **PT-01** are:

- **MS6.2** (CURSOR engines)
- **MS6.3** (SOFIM HPI engines)
- **EDC16** (SOFIM HPI Euro 3/Tier 2 engines)
- **EDC7** (NEF Euro 3/Tier 2 engines)
- **EDC7UC31** (CURSOR-NEF Euro 4/Tier 3 engines)
- **EDC16C39** (SOFIM HPI Euro 4/Tier 3 engines)
- **MARELLI IAV1AF** (8149 natural gas engines)
- **BOSCH MOTRONIC** (8469 natural gas engines)
- **METAFUEL MF3** (NEF engines and CURSOR natural gas engines)

The **main functions** of the portable Tester are:

- ECU identification code reading
- Reading of failure memory and related environmental conditions
- Possibility to clear the failure memory
- Reading of measurable operating parameters
- Reading of status parameters
- Active diagnostics
- FLIGHT RECORDER reading (only for **MS6.2 – MS6.3 – EDC7 ECUs**)
- EPS mode ( interface with Personal Computer)

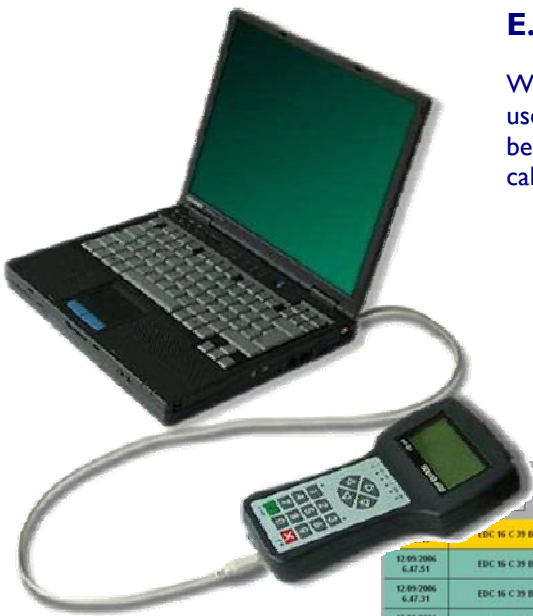
The software upgrade of PT-01 portable tester is carried out by means of a PC with related EVCASYNC software that can be ordered to Marketing Advertising & Promotion, by sending a request to the e-mail address: [PT-IT-Advertising@iveco.com](mailto:PT-IT-Advertising@iveco.com)  
Minimum PC requirement for upgrade is *WINDOWS 2000*.

**NOTE:** if upgrade is performed by the USB port, the Tester does not need to be supplied.  
If the serial cable RS232 is used instead, the tester must be supplied using the 6-32V power supply unit (not included in the Kit supply)

## E.A.SY. DIAGNOSIS

With the E.A.SY. DIAGNOSIS software, the extended graphic interface is used, thus allowing more details, made possible by the larger space that can be displayed on the PC monitor, by improved graphic quality and better calculation performance.

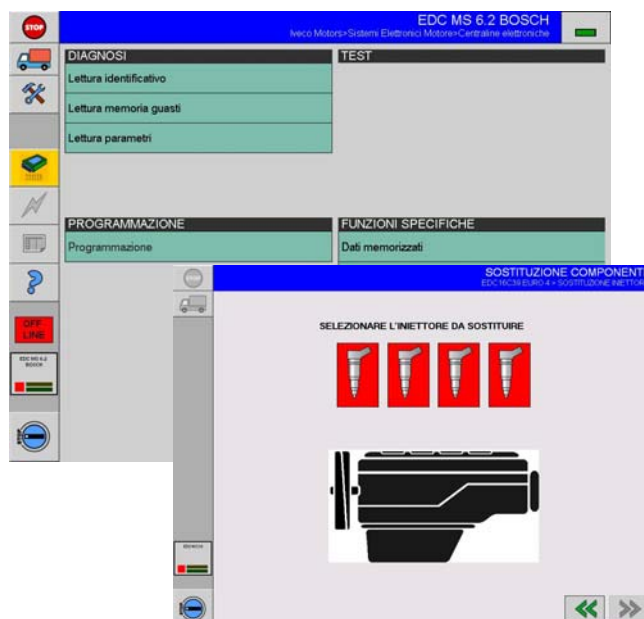
The portable tester is used as a hardware interface between engine ECU and PC (EPS mode).



The program allows testing the ECUs and, differently from the portable tester, this program also allows tier 2 programming and other specific functions.

In the **Diagnostics** environment, besides all the main functions available with the PT-01 portable tester, the trend of parameters measurable in graph format can be displayed and saved on the PC.

By means of **Level 2 programming**, it is possible to set and modify predefined parameters for adequate engine use, depending on the application, such as: speed limiter, PTO, Cruise control, etc. **IT IS NOT POSSIBLE** to operate by engine power variations.



The **specific functions** allow, in case of ECU, engine or injector replacement, to update the ECU to the new configuration in one of the three replacement cases mentioned above.

Moreover, it is possible to read the **Flight Recorder** for all ECUs, excluding those for natural gas engine control. This function allows monitoring engine life, knowing its operating hours, ignition cycles, out-of-revs, etc.

# VECTOR DIAGNOSIS

The graphic interface of the VECTOR diagnostics computer has been designed to facilitate the use of instruments made available to the user, give visibility to the functions available, make diagnostics procedures understandable and convenient the most varied requirements.



1. Personal Computer (not included in the kit supply)
2. Compact Communication adapter
3. Connection cable to the engine
4. Diagnostics and programming software

The diagnostics software allows testing the VECTOR engines employed in marine, industrial and Power Generation applications

The **main functions** in the Diagnostics environment are:

- Engine ECU identification
- Active failure code reading
- Active event code reading
- Stored failure code reading
- Stored event code reading (FLIGHT RECORDER)
- Recording of the environmental parameters of a stored failure or event (SNAP SHOT)
- Operating parameter reading
- Active testing
- Acquisition and saving on PC of parameters in graphic or table format

With the **Level 2 programming**, for marine and Power generation applications only, the software displays various configuration templates depending on the application. This function is not available for railway applications.

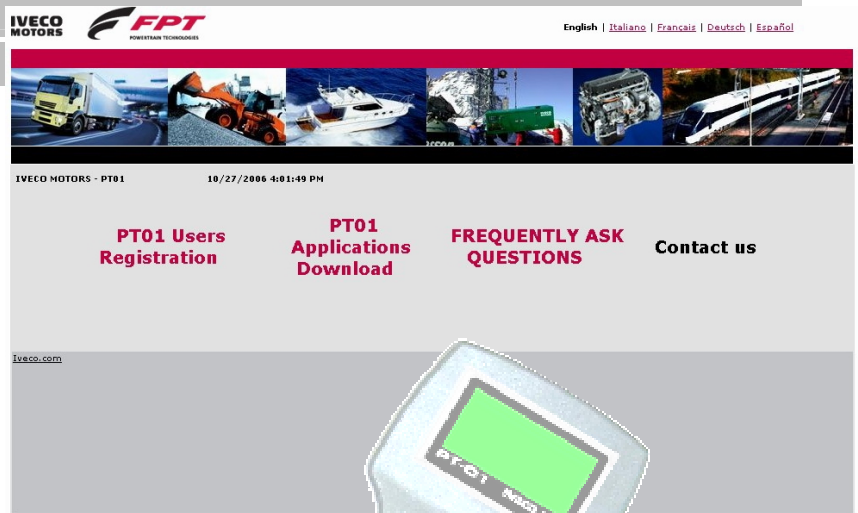
For the VECTOR Diagnostics software update, upgraded releases are provided from time to time on CD-rom.

ORDER NUMBER	PRODUCT DESCRIPTION
8094526	<p style="text-align: center;"><b>Kit PT-01 including:</b></p> <ul style="list-style-type: none"> <li>• PT-01 portable tester</li> <li>• Connection cable between tester and 30-pin diagnostic socket (8094615)</li> <li>• 30 and 19 pin adapter (8030922)</li> <li>• 30 and 38 pin adapter (99331043)</li> <li>• Technical supporting manuals</li> </ul>
99368550	<p style="text-align: center;"><b>Kit VECTOR including:</b></p> <ul style="list-style-type: none"> <li>• Communication interface</li> <li>• Connection cable between tester and 19-pin diagnostic socket (99368551)</li> <li>• USB cable for personal computer</li> <li>• Software installation CD-rom</li> </ul>
99368552	<p style="text-align: center;">Connection cable between <b>VECTOR</b> interface and 25-pin diagnostic socket (use with kit 99368550 only)</p>

**PRODUCTS LISTED IN TABEL CAN BE ORDERED TO  
IVECO MOTORS-FPT SPARE PART SERVICE**

**SOFTWARE DOWNLOAD PT- 01**

The software and future updates can be downloaded from [www.ivecomotors.com](http://www.ivecomotors.com) following this path:  
Area Partner> After Sales> Various> Click ... to download the PT-01 diagnostic software from website



**IVECO  
MOTORS**



Information contained in this document correspond to the publishing date.  
The Manufacturer reserves the right to make changes without notice and at any time, for technical or commercial reasons, as well as to upgrade motors to the legal requirements of the various countries.

The Manufacturer accepts no responsibility for errors nor omissions.

**C0G36Z008E – 1° Ed. 10.2006**